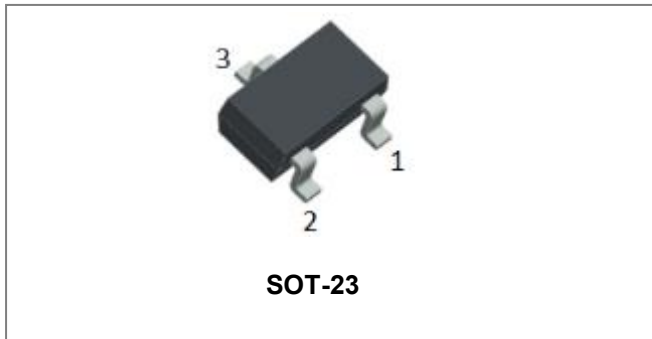


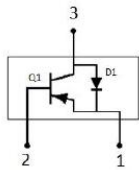
SSTX304S PNP General Purpose Amplifier



Features

- **Low saturation Voltage(Transistor)**
: $V_{CE(sat)} = -0.4V(\text{Max.})$; $I_C = -150mA$, $I_B = -15mA$
Fast Reverse Recovery Time(Diode)
- **Capable of 350mWatts of Power Dissipation**
- **Operating and Storage Junction Temperatures: $-55^{\circ}C$ to $150^{\circ}C$**
- **Surface Mount SOT-23 Package**
- **RoHS compliant / Green EMC**
- **Collector current: $I_C = -0.6A$**

Schematic & Pin Configuration



1. EMITTER/CATHODE
2. BASE
3. COLLECTOR/ANODE

Mechanical Characteristics

- **Case: SOT-23, Molded Plastic**
- **Terminals: Plated leads Solderable per MIL-STD-202, Method 208**
- **Mounting Position: Any**

Maximum Ratings@ $T_A = 25^{\circ}C$ unless otherwise specified

TRANSISTOR(Q1)

Characteristic	Symbol	Limits	Unit
Collector-Base Voltage	V_{CBO}	-60	V
Emitter-Base Voltage	V_{EBO}	-5	V
Collector Current	I_C	-0.6	A

DIODE(D1)

Characteristic	Symbol	Limits	Unit
Maximum (peak) Forward Current	I_{FM}	450	mA
Average Forward Current	I_O	150	mA
Surge Current (100uS)	I_{FSM}	2	A

COMMON

Characteristic	Symbol	Limits	Unit
Maximum Output (Pin1-Pin3)Voltage	V_O	-60	V
Power Dissipation	P_C	350	mW
Junction Temperature Range	T_j	150	$^{\circ}C$
Storage Temperature Range	T_{stg}	-55~150	$^{\circ}C$

Electrical Characteristics @ $T_A=25^{\circ}\text{C}$ unless otherwise specified
TRANSISTOR(Q1)

Characteristic	Symbol	Test Condition	Min.	Typ.	Max.	Unit
Collector-base breakdown voltage	V_{CBO}	$I_C=-10\mu\text{A}, I_E=0$	-60			V
Emitter-base breakdown voltage	V_{EBO}	$I_E=-10\mu\text{A}, I_C=0$	-5			V
Collector cutoff current	I_{CBO}	$V_{CB}=-50\text{V}, I_E=0$			-10	nA
DC current gain	h_{FE}	$h_{FE(1)} I_C=-0.1\text{mA}, V_{CE}=-10\text{V}^*$	75			
		$h_{FE(2)} I_C=-1\text{mA}, V_{CE}=-10\text{V}^*$	100			
		$h_{FE(3)} I_C=-10\text{mA}, V_{CE}=-10\text{V}^*$	100			
		$h_{FE(4)} I_C=-150\text{mA}, V_{CE}=-10\text{V}^*$	100		300	
		$h_{FE(5)} I_C=-500\text{mA}, V_{CE}=-10\text{V}^*$	50			
Collector-emitter saturation voltage	$V_{CE(sat)}$	$I_C=-150\text{mA}, I_B=-15\text{mA}^*$ $I_C=-500\text{mA}, I_B=-50\text{mA}^*$			-0.4 -1.6	V
Base-emitter saturation voltage	$V_{BE(sat)}$	$I_C=-150\text{mA}, I_B=-15\text{mA}^*$ $I_C=-500\text{mA}, I_B=-50\text{mA}^*$			-1.3 -2.6	V
Input Capacitance	C_{ib}	$V_{EB}=-2\text{V}, I_C=0, f=1.0\text{MHZ}$		17.5		pF

* Measured under pulsed conditions, Pulse width < 300 μs , duty cycle < 2%

DIODE(D1)

Characteristics	Symbol	Condition	Min.	Typ.	Max.	Units
Forward Voltage Drop	V_{F1}	$I_F=1\text{mA}$		0.60		V
		$I_F=10\text{mA}$		0.72		
		$I_F=100\text{mA}$		0.90	1.2	

COMMON

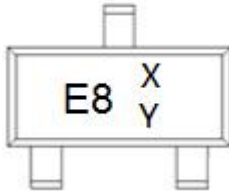
Characteristics	Symbol	Condition	Min.	Typ.	Max.	Units
Output Voltage	V_O	$I_O=-1\text{mA}, I_B=0$	-60			V
Output Leakage Current	$I_O(\text{off})$	$V_O=-30\text{V}, V_{EB}=-0.5\text{V}$			-0.5	μA
Output Capacitance	C_{Ob}	$V_R=-10\text{V}, I_E=0, f=1\text{MHZ}$		8.5		pF

Ordering Information

Device	Package	Shipping	Tape wide	Emboss pitch
SSTX304S	SOT-23	3000 pcs / reel	8mm	4mm

For information on tape and reel specifications, including part orientation and tape sizes, please refer to our tape and reel packaging specification.

Marking Diagram

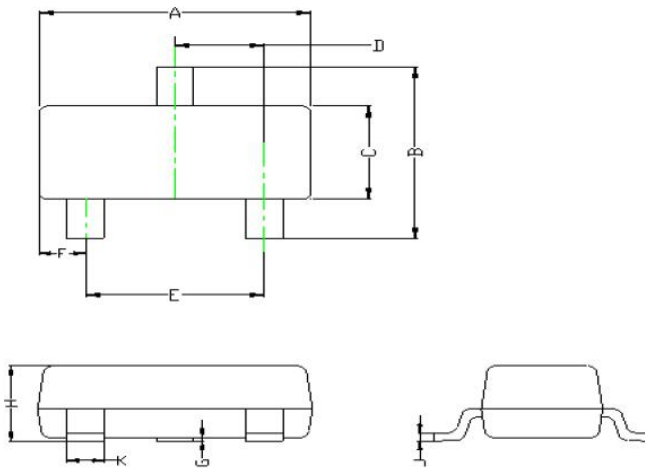


Where XY is date code

E8 = Marking code
X = Month code
Y = Lot code

X	A	B	C	D	E	F	G	H	J	K	L	M
Month code	January	February	March	April	May	June	July	August	September	October	November	December
Y Lot code	0	1	2	3	4	5	6	7	8	9	-	-

Mechanical Dimensions SOT-23



SYMBOL	Millimeters	
	MIN.	MAX.
A	2.800	3.040
B	2.100	2.640
C	1.200	1.400
D	0.890	1.030
E	1.780	2.050
F	0.450	0.600
G	0.013	0.100
H	0.900	1.110
J	0.090	0.180
K	0.370	0.510

DISCLAIMER:

- 1- The information given herein, including the specifications and dimensions, is subject to change without prior notice to improve product characteristics. Before ordering, purchasers are advised to contact the SMC Diode Solutions sales department for the latest version of the datasheet(s).
- 2- In cases where extremely high reliability is required (such as use in nuclear power control, aerospace and aviation, traffic equipment, medical equipment, and safety equipment), safety should be ensured by using semiconductor devices that feature assured safety or by means of users' fail-safe precautions or other arrangement.
- 3- In no event shall SMC Diode Solutions be liable for any damages that may result from an accident or any other cause during operation of the user's units according to the datasheet(s). SMC Diode Solution assumes no responsibility for any intellectual property claims or any other problems that may result from applications of information, products or circuits described in the datasheets.
- 4- In no event shall SMC Diode Solutions be liable for any failure in a semiconductor device or any secondary damage resulting from use at a value exceeding the absolute maximum rating.
- 5- No license is granted by the datasheet(s) under any patents or other rights of any third party or SMC Diode Solutions.
- 6- The datasheet(s) may not be reproduced or duplicated, in any form, in whole or part, without the expressed written permission of SMC Diode Solutions.
- 7- The products (technologies) described in the datasheet(s) are not to be provided to any party whose purpose in their application will hinder maintenance of international peace and safety nor are they to be applied to that purpose by their direct purchasers or any third party. When exporting these products (technologies), the necessary procedures are to be taken in accordance with related laws and regulations..