

Octal buffer/line driver; 3-state

74LVC241

FEATURES

- Wide supply voltage range of 1.2 V to 3.6 V
- In accordance with JEDEC standard no. 8-1A.
- Inputs accept voltages up to 5.5 V
- CMOS low power consumption
- Direct interface with TTL levels
- Output drive capability 50 Ω transmission lines @ 85 °C

DESCRIPTION

The 74LVC241 is a high-performance, low-power, low-voltage, Si-gate CMOS device and superior to most advanced CMOS compatible TTL families.

Inputs can be driven from either 3.3 V or 5 V devices. This feature allows the use of these devices as translators in a mixed 3.3 V/5 V environment

The 74LVC241 is an octal non-inverting buffer/line driver with 3-state outputs. The 3-state outputs are controlled by the output enable inputs $\overline{1OE}$ and 2OE. Schmitt-trigger action at all inputs makes the circuit highly tolerant for slower input rise and fall times.

FUNCTION TABLES

INPUTS		OUTPUT
$\overline{1OE}$	$1A_n$	$1Y_n$
L	L	L
L	H	H
H	X	Z

INPUTS		OUTPUT
2OE	$2A_n$	$2Y_n$
H	L	L
H	H	H
L	X	Z

H = HIGH voltage level
 L = LOW voltage level
 X = don't care
 Z = high impedance OFF-state

QUICK REFERENCE DATA

GND = 0 V; $T_{amb} = 25\text{ °C}$; $t_r = t_f \leq 2.5\text{ ns}$

SYMBOL	PARAMETER	CONDITIONS	TYPICAL	UNIT
t_{PHL}/t_{PLH}	propagation delay $1A_n$ to $1Y_n$; $2A_n$ to $2Y_n$	$C_L = 50\text{ pF}$ $V_{CC} = 3.3\text{ V}$	4.8	ns
C_I	input capacitance		5.0	pF
C_{PD}	power dissipation capacitance per buffer	notes 1 and 2	30	pF

Notes to the quick reference data

- C_{PD} is used to determine the dynamic power dissipation (P_D in μW)
 $P_D = C_{PD} \times V_{CC}^2 \times f_i + \sum (C_L \times V_{CC}^2 \times f_o)$ where:
 f_i = input frequency in MHz; C_L = output load capacity in pF;
 f_o = output frequency in MHz; V_{CC} = supply voltage in V;
 $\sum (C_L \times V_{CC}^2 \times f_o)$ = sum of the outputs.
- The condition is $V_i = \text{GND to } V_{CC}$

ORDERING INFORMATION

TYPE NUMBER	PACKAGES			
	PINS	PACKAGE	MATERIAL	CODE
74LVC241D	20	SO	plastic	SOT163-1
74LVC241DB	20	SSOP	plastic	SOT339-1
74LVC241PW	20	TSSOP	plastic	SOT360-1

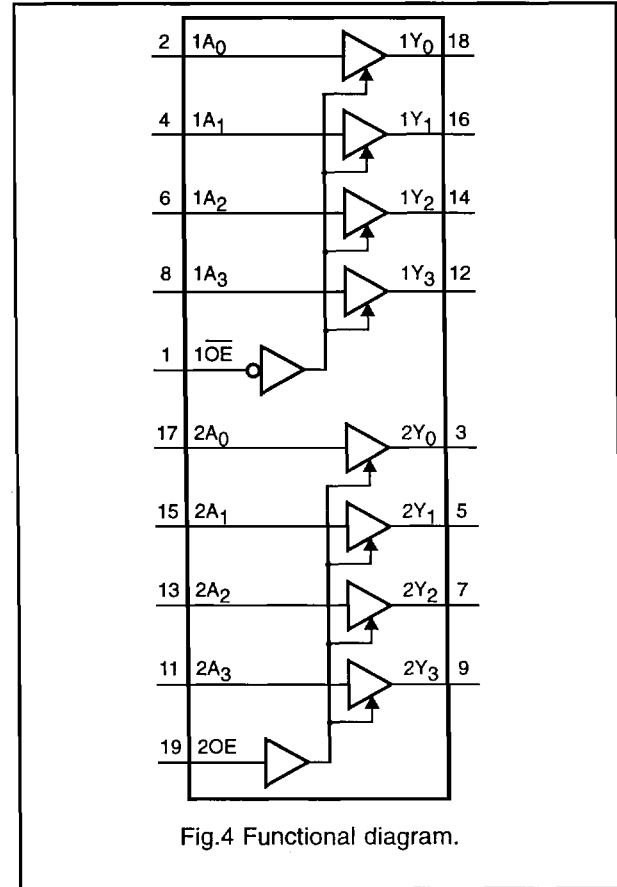
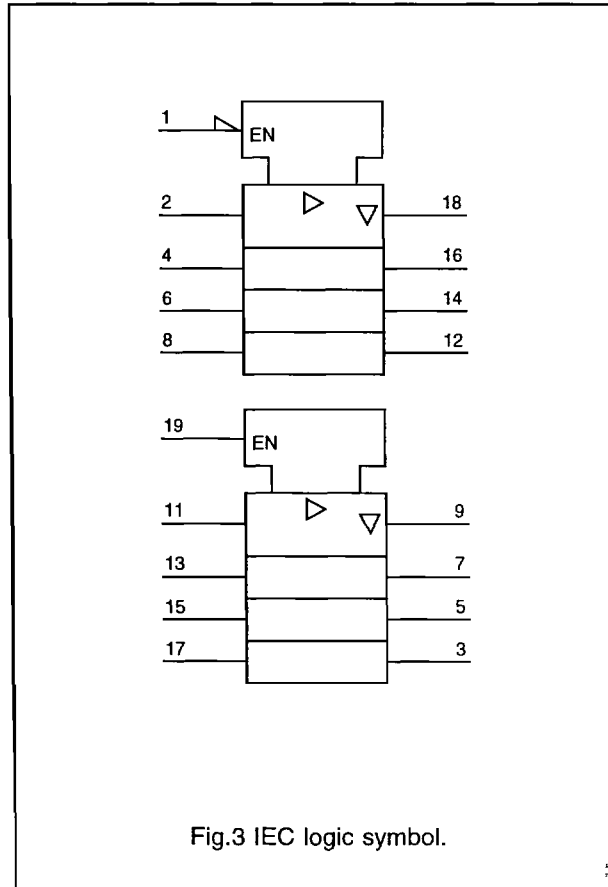
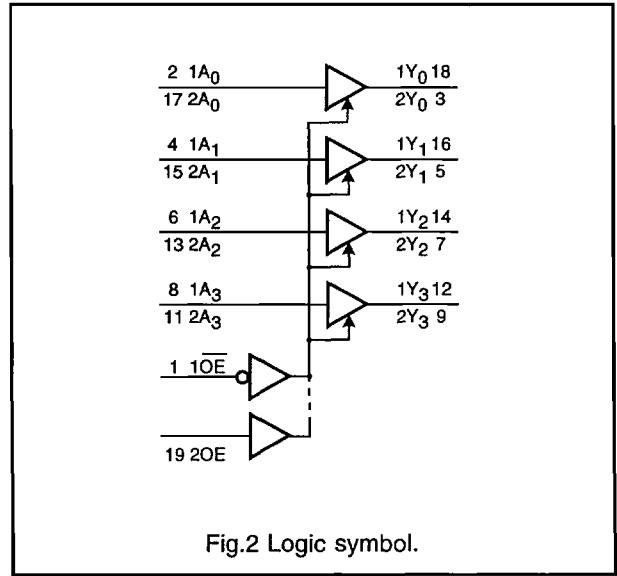
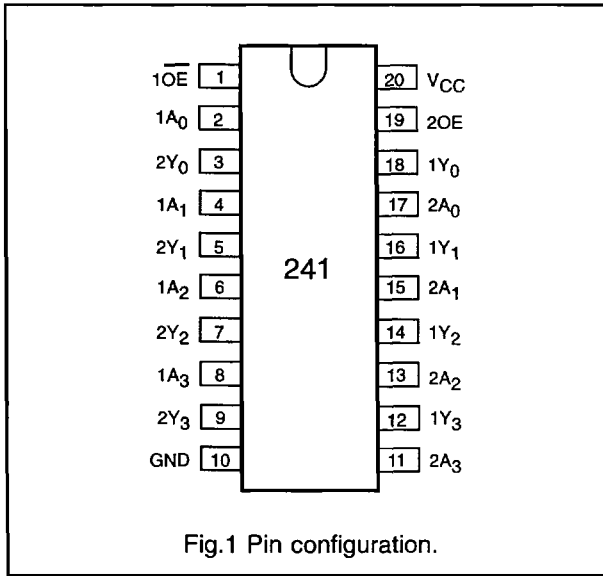
PINNING

PIN NO.	SYMBOL	NAME AND FUNCTION
1	$\overline{1OE}$	output enable input (active LOW)
2, 4, 6, 8	$1A_0$ to $1A_3$	data inputs
3, 5, 7, 9	$2Y_0$ to $2Y_3$	bus outputs
10	GND	ground (0 V)
17, 15, 13, 11	$2A_0$ to $2A_3$	data inputs
18, 16, 14, 12	$1Y_0$ to $1Y_3$	bus outputs
19	2OE	output enable input (active HIGH)
20	V_{CC}	positive power supply

PHGLS125

Octal buffer/line driver; 3-state

74LVC241



Octal buffer/line driver; 3-state

74LVC241

DC CHARACTERISTICS FOR 74LVC241

For the DC characteristics see chapter "LVC family characteristics", section "Family specifications".

 I_{CC} category: MSI**AC CHARACTERISTICS FOR 74LVC241**GND = 0 V; $t_r = t_f \leq 2.5$ ns; $C_L = 50$ pF

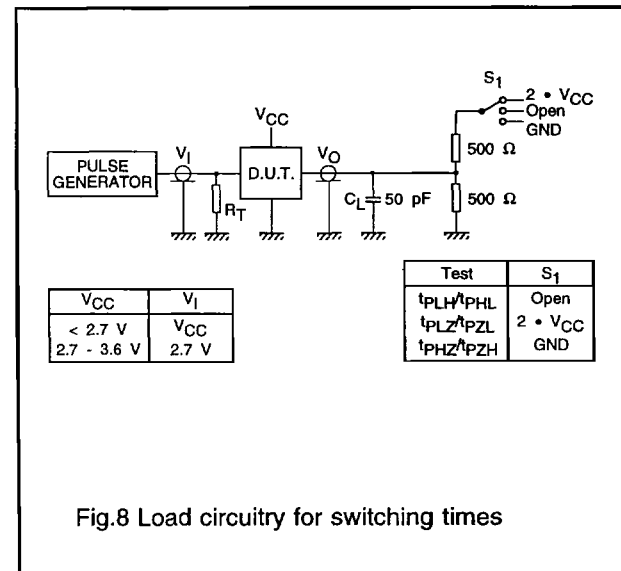
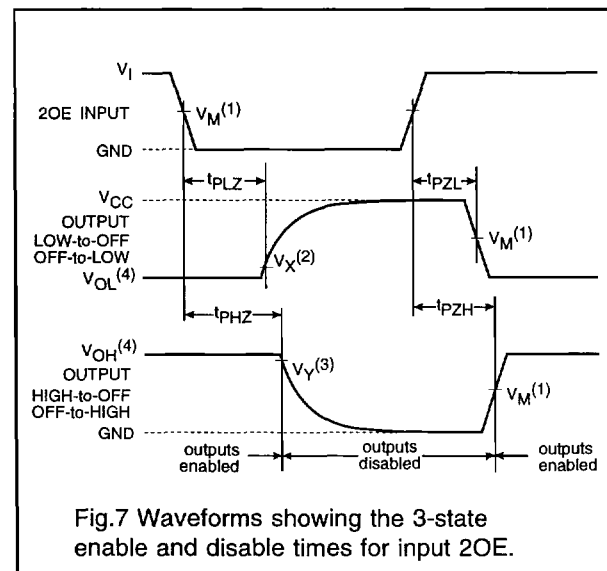
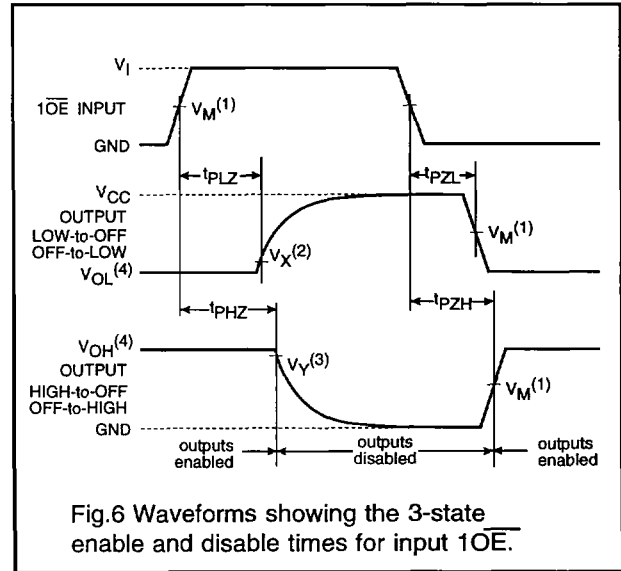
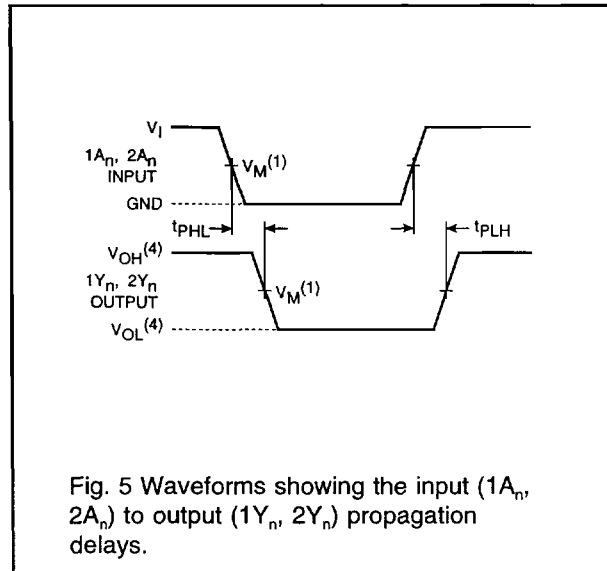
SYMBOL	PARAMETER	T_{amb} (°C)			UNIT	TEST CONDITIONS	
		-40 to +85				V_{CC} (V)	WAVEFORMS
		MIN.	TYP.	MAX.			
t_{PHL}/t_{PLH}	propagation delay 1A _n to 1Y _n ; 2A _n to 2Y _n	– 1.5 1.5	23 5.1 4.8*	– 7.7 7.3	ns	1.2 2.7 3.0 to 3.6	Figs 5, 8
t_{PZH}/t_{PZL}	3-state output enable time 1OE to 1Y _n	– 1.5 1.5	48 5.9 5.6*	– 8.5 8.1	ns	1.2 2.7 3.0 to 3.6	Figs 6, 8
t_{PHZ}/t_{PLZ}	3-state output disable time 1OE to 1Y _n	– 1.5 1.5	5.8 3.8 3.6*	– 5.9 5.5	ns	1.2 2.7 3.0 to 3.6	Figs 6, 8
t_{PZH}/t_{PZL}	3-state output enable time 2OE to 2Y _n	– 1.5 1.5	42 5.9 5.6*	– 8.5 8.1	ns	1.2 2.7 3.0 to 3.6	Figs 7, 8
t_{PHZ}/t_{PLZ}	3-state output disable time 2OE to 2Y _n	– 1.5 1.5	7.5 3.8 3.6*	– 5.9 5.5	ns	1.2 2.7 3.0 to 3.6	Figs 7, 8

Notes: All typical values are measured at $T_{amb} = 25$ °C.* Typical values are measured at $V_{CC} = 3.3$ V.

Octal buffer/line driver; 3-state

74LVC241

AC WAVEFORMS



- Notes: (1) $V_M = 1.5 \text{ V}$ at $V_{CC} \geq 2.7 \text{ V}$
 $V_M = 0.5 \cdot V_{CC}$ at $V_{CC} < 2.7 \text{ V}$
 (2) $V_X = V_{OL} + 0.3 \text{ V}$ at $V_{CC} \geq 2.7 \text{ V}$
 $V_X = V_{OL} + 0.1 \cdot V_{CC}$ at $V_{CC} < 2.7 \text{ V}$
 (3) $V_Y = V_{OH} - 0.3 \text{ V}$ at $V_{CC} \geq 2.7 \text{ V}$
 $V_Y = V_{OH} - 0.1 \cdot V_{CC}$ at $V_{CC} < 2.7 \text{ V}$
 (4) V_{OL} and V_{OH} are the typical output voltage drop that occur with the output load.