

LM124, LM124A, LM224, LM224A LM324, LM324A, LM324Y, LM2902, LM2902Q QUADRUPLE OPERATIONAL AMPLIFIERS

SLOS066E—SEPTEMBER 1975—REVISED FEBRUARY 1997

- **Wide Range of Supply Voltages:**
Single Supply . . . 3 V to 30 V
(LM2902 and LM2902Q
3 V to 26 V), or Dual Supplies
- **Low Supply Current Drain Independent of Supply Voltage . . . 0.8 mA Typ**
- **Common-Mode Input Voltage Range Includes Ground Allowing Direct Sensing Near Ground**
- **Low Input Bias and Offset Parameters:**
Input Offset Voltage . . . 3 mV Typ
A Versions . . . 2 mV Typ
Input Offset Current . . . 2 nA Typ
Input Bias Current . . . 20 nA Typ
A Versions . . . 15 nA Typ
- **Differential Input Voltage Range Equal to Maximum-Rated Supply Voltage . . . 32 V**
(26 V for LM2902 and LM2902Q)
- **Open-Loop Differential Voltage Amplification . . . 100 V/mV Typ**
- **Internal Frequency Compensation**

description

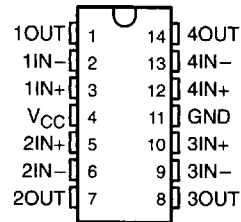
These devices consist of four independent high-gain frequency-compensated operational amplifiers that are designed specifically to operate from a single supply over a wide range of voltages. Operation from split supplies is also possible when the difference between the two supplies is 3 V to 30 V (for the LM2902 and LM2902Q, 3 V to 26 V) and V_{CC} is at least 1.5 V more positive than the input common-mode voltage. The low supply current drain is independent of the magnitude of the supply voltage.

Applications include transducer amplifiers, dc amplification blocks, and all the conventional operational amplifier circuits that now can be more easily implemented in single-supply-voltage systems. For example, the LM124 can be operated directly from the standard 5-V supply that is used in digital systems and easily provides the required interface electronics without requiring additional ± 15 -V supplies.

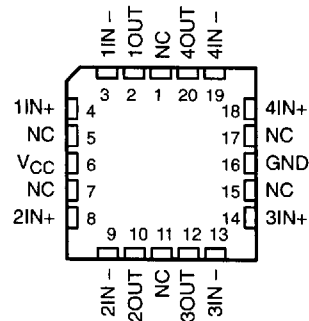
The LM2902Q is manufactured to demanding automotive requirements.

The LM124 and LM124A are characterized for operation over the full military temperature range of -55°C to 125°C . The LM224 and LM224A are characterized for operation from -25°C to 85°C . The LM324 and LM324A are characterized for operation from 0°C to 70°C . The LM2902 and LM2902Q are characterized for operation from -40°C to 125°C .

LM124, LM124A . . . J OR W PACKAGE
ALL OTHERS . . . D, DB, N OR PW PACKAGE
(TOP VIEW)

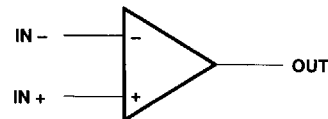


LM124, LM124A . . . FK PACKAGE
(TOP VIEW)



NC – No internal connection

symbol (each amplifier)



8961724 0106139 974

PRODUCTION DATA information is current as of publication date. Products conform to specifications per the terms of Texas Instruments standard warranty. Production processing does not necessarily include testing of all parameters.

**TEXAS
INSTRUMENTS**

POST OFFICE BOX 655303 • DALLAS, TEXAS 75265

Copyright © 1997, Texas Instruments Incorporated

LM124, LM124A, LM224, LM224A LM324, LM324A, LM324Y, LM2902, LM2902Q QUADRUPLE OPERATIONAL AMPLIFIERS

SLOS066E—SEPTEMBER 1975—REVISED FEBRUARY 1997

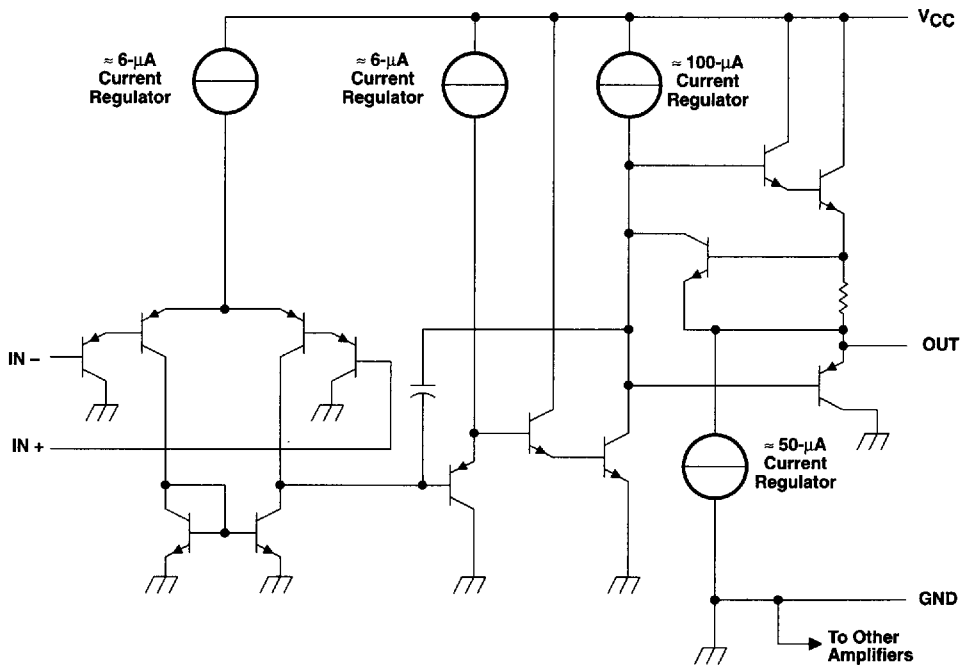
AVAILABLE OPTIONS

T _A	V _{IO} max AT 25°C	PACKAGED DEVICES							CHIP FORM (Y)
		SMALL OUTLINE (D)†	VERY SMALL OUTLINE (DB)‡	CHIP CARRIER (FK)	CERAMIC DIP (J)	PLASTIC DIP (N)	TSSOP (PW)‡	FLAT PACK (W)	
0°C to 70°C	7 mV	LM324D	LM324DBLE	—	—	LM324N	LM324PWLE	—	LM324Y
	3 mV	LM324AD	—	—	—	LM324AN	LM324APWLE	—	
-25°C to 85°C	5 mV	LM224D	—	—	—	LM224N	—	—	—
	3 mV	LM224AD	—	—	—	LM224AN	—	—	
-40°C to 125°C	7 mV	LM2902D	LM2902DBLE	—	—	LM2902N	LM2902PWLE	—	—
	—	LM2902QD	—	—	—	LM2902QN	—	—	
-55°C to 125°C	5 mV	—	—	LM124FK	LM124J	—	—	LM124W	—
	2 mV	—	—	LM124AFK	LM124AJ	—	—	—	

† The D package is available taped and reeled. Add the suffix R to the device type (e.g., LM324DR).

‡ The DB and PW packages are only available left-end taped and reeled.

schematic (each amplifier)



COMPONENT COUNT (total device)	
Epi-FET	1
Transistors	95
Diodes	4
Resistors	11
Capacitors	4

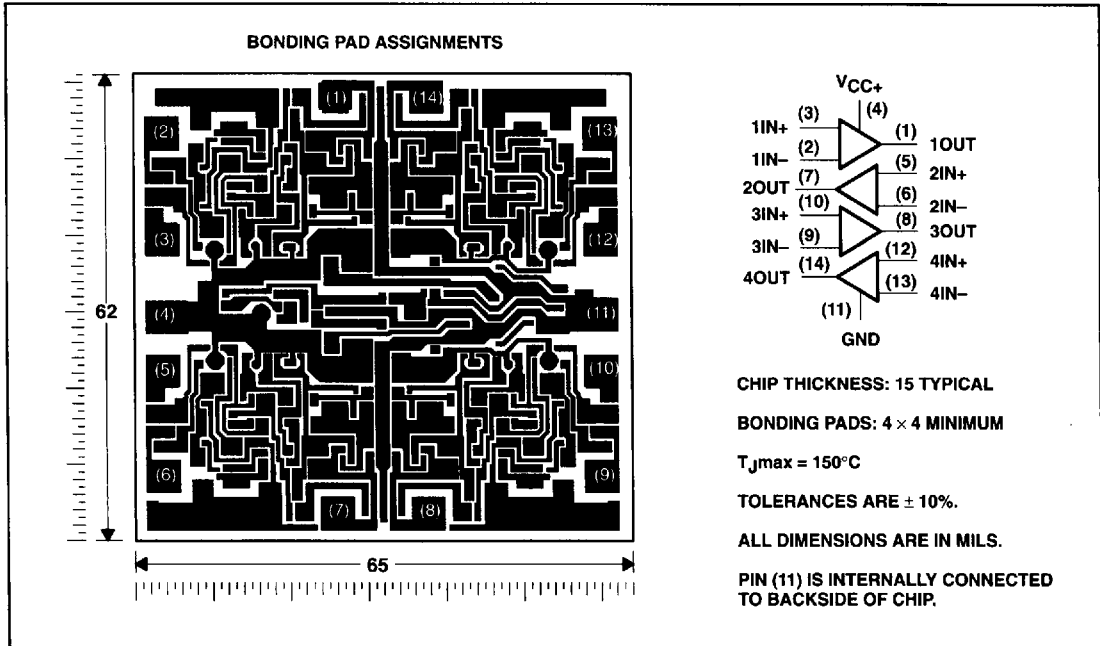
8961724 0106140 616

 **TEXAS
INSTRUMENTS**

**LM124, LM124A, LM224, LM224A
LM324, LM324A, LM324Y, LM2902, LM2902Q
QUADRUPLE OPERATIONAL AMPLIFIERS**
SLOS066E—SEPTEMBER 1975—REVISED FEBRUARY 1997

LM324Y chip information

This chip, when properly assembled, displays characteristics similar to the LM324. Thermal compression or ultrasonic bonding may be used on the doped-aluminum bonding pads. Chips may be mounted with conductive epoxy or a gold-silicon preform.



8961724 0106141 552

**TEXAS
INSTRUMENTS**

POST OFFICE BOX 655303 • DALLAS, TEXAS 75265

**LM124, LM124A, LM224, LM224A
LM324, LM324A, LM324Y, LM2902, LM2902Q
QUADRUPLE OPERATIONAL AMPLIFIERS**

SLOS066E- SEPTEMBER 1975 - REVISED FEBRUARY 1997

absolute maximum ratings over operating free-air temperature range (unless otherwise noted)†

	LM124, LM124A LM224, LM224A LM324, LM324A	LM2902, LM2902Q	UNIT
Supply voltage, V_{CC} (see Note 1)	32	26	V
Differential input voltage, V_{ID} (see Note 2)	± 32	± 26	V
Input voltage, V_I (either input)	-0.3 to 32	-0.3 to 26	V
Duration of output short circuit (one amplifier) to ground at (or below) $T_A = 25^\circ\text{C}$, $V_{CC} \leq 15\text{ V}$ (see Note 3)	unlimited	unlimited	
Continuous total dissipation	See Dissipation Rating Table		
Operating free-air temperature range, T_A	LM124, LM124A	-55 to 125	°C
	LM224, LM224A	-25 to 85	
	LM324, LM324A	0 to 70	
	LM2902, LM2902Q	-40 to 125	
Storage temperature range	-65 to 150	-65 to 150	°C
Case temperature for 60 seconds	FK package	260	°C
Lead temperature 1,6 mm (1/16 inch) from case for 60 seconds	J or W package	300	°C
Lead temperature 1,6 mm (1/16 inch) from case for 10 seconds	D, DB, N, or PW package	260	°C

† Stresses beyond those listed under "absolute maximum ratings" may cause permanent damage to the device. These are stress ratings only, and functional operation of the device at these or any other conditions beyond those indicated under "recommended operating conditions" is not implied. Exposure to absolute-maximum-rated conditions for extended periods may affect device reliability.

- NOTES: 1. All voltage values (except differential voltages and V_{CC} specified for the measurement of I_{OS}) are with respect to the network GND.
2. Differential voltages are at $IN+$ with respect to $IN-$.
3. Short circuits from outputs to V_{CC} can cause excessive heating and eventual destruction.

DISSIPATION RATING TABLE

PACKAGE	$T_A \leq 25^\circ\text{C}$ POWER RATING	DERATING FACTOR	DERATE ABOVE T_A	$T_A = 70^\circ\text{C}$ POWER RATING	$T_A = 85^\circ\text{C}$ POWER RATING	$T_A = 125^\circ\text{C}$ POWER RATING
D	900 mW	7.6 mW/°C	32°C	611 mW	497 mW	N/A
DB	775 mW	6.2 mW/°C	25°C	496 mW	403 mW	N/A
FK	900 mW	11.0 mW/°C	68°C	878 mW	713 mW	273 mW
J (LM124_)	900 mW	11.0 mW/°C	68°C	878 mW	713 mW	273 mW
J (all others)	900 mW	8.2 mW/°C	40°C	654 mW	531 mW	N/A
N	900 mW	9.2 mW/°C	52°C	734 mW	596 mW	N/A
PW	700 mW	5.6 mW/°C	25°C	448 mW	364 mW	N/A
W	900 mW	8.0 mW/°C	37°C	636 mW	516 mW	196 mW

8961724 0106142 499



POST OFFICE BOX 655303 • DALLAS, TEXAS 75265

LM124, LM124A, LM224, LM224A
LM324, LM324A, LM324Y, LM2902, LM2902Q
QUADRUPLE OPERATIONAL AMPLIFIER

SLOS066E - SEPTEMBER 1975 - REVISED FEBRUARY 1997

electrical characteristics at specified free-air temperature, $V_{CC} = 5\text{ V}$ (unless otherwise noted)

PARAMETER	TEST CONDITIONS†	T_A ‡	LM124, LM224			LM324			LM2902, LM2902Q			UNIT
			MIN	TYP§	MAX	MIN	TYP§	MAX	MIN	TYP§	MAX	
V_{IO}	$V_{CC} = 5\text{ V to MAX}$, $V_{IC} = V_{ICRmin}$, $V_O = 1.4\text{ V}$	25°C	3	5	7	3	5	7	3	5	7	mV
	Full range	Full range	2	30	7	2	30	9	2	50	10	
I_{IO}	$V_O = 1.4\text{ V}$	25°C										nA
	Full range	Full range		100	150		150			300		
I_{IB}	$V_O = 1.4\text{ V}$	25°C										nA
	Full range	Full range		-300	-500		-250			-20		
V_{ICR}	Common-mode input voltage range	25°C	0 to V_{CC-} 1.5			0 to V_{CC-} 1.5			0 to V_{CC-1} .5			V
	$V_{CC} = 5\text{ V to MAX}$	Full range	0 to V_{CC-} 2			0 to V_{CC-} 2			0 to V_{CC-2}			
	Full range	Full range	V_{CC-} 1.5			V_{CC-} 1.5			V_{CC-1} .5			
V_{OH}	High-level output voltage	25°C										V
	$R_L = 10\text{ k}\Omega$	25°C										
	$V_{CC} = \text{MAX}$, $R_L = 2\text{ k}\Omega$	Full range	26			26			22			
	$V_{CC} = \text{MAX}$, $R_L \geq 10\text{ k}\Omega$	Full range	27			27			23			
V_{OL}	Low-level output voltage	25°C										mV
	$R_L \leq 10\text{ k}\Omega$	Full range	5			5			5			
A_{VD}	Large-signal differential voltage amplification	25°C										V/mV
	$V_{CC} = 15\text{ V}$, $V_O = 1\text{ V to }11\text{ V}$, $R_L = 2\text{ k}\Omega$	Full range	50	100	100	25	100	100	15	100	100	
$CMRR$	Common-mode rejection ratio	25°C										dB
	$V_{IC} = V_{ICRmin}$	Full range	70	80	80	65	80	80	50	80	80	
k_{SVR}	Supply-voltage rejection ratio ($\Delta V_{CC}/\Delta V_{IO}$)	25°C										dB
	$f = 1\text{ kHz to }20\text{ kHz}$	25°C	65	100	100	65	100	100	50	100	100	
V_{OI}/V_{O2}	Crosstalk attenuation	25°C										dB
	$V_{CC} = 15\text{ V}$, $V_{ID} = 1\text{ V}$, $V_O = 0$	25°C	-20	-30	-60	-20	-30	-60	-20	-30	-60	
I_O	Output current	25°C										mA
	$V_{CC} = 15\text{ V}$, $V_{ID} = -1\text{ V}$, $V_O = 15\text{ V}$	Full range	10	20	20	10	20	20	10	20	20	
	Full range	Full range	5	5	5	5	5	5	5	5	5	
I_{OS}	Short-circuit output current	25°C										μA
	$V_{ID} = -1\text{ V}$, $V_O = 200\text{ mV}$	25°C	12	30	30	12	30	30	12	30	30	
	$V_{CC} = 15\text{ V}$, $GND = -5\text{ V}$	25°C	± 40	± 60	± 60	± 40	± 60	± 60	± 40	± 60	± 60	mA
I_{CC}	Supply current (four amplifiers)	25°C										mA
	$V_O = 2.5\text{ V}$, No load	Full range	0.7	1.2	1.2	0.7	1.2	1.2	0.7	1.2	1.2	
	$V_{CC} = \text{MAX}$, $V_O = 0.5\text{ V}_{CC}$	Full range	1.4	3	3	1.4	3	3	1.4	3	3	

† All characteristics are measured under open-loop conditions with zero common-mode input voltage unless otherwise specified. MAX V_{CC} for testing purposes is 26 V for LM2902 and LM2902Q, 30 V for the others.
 ‡ Full range is -55°C to 125°C for LM124, -25°C to 85°C for LM224, 0°C to 70°C for LM324, and -40°C to 125°C for LM2902 and LM2902Q.
 § All typical values are at $T_A = 25^\circ\text{C}$.



LM124, LM124A, LM224, LM224A
LM324, LM324A, LM324Y, LM2902, LM2902Q
QUADRUPLE OPERATIONAL AMPLIFIERS
 SLOS066E - SEPTEMBER 1975 - REVISED FEBRUARY 1997

electrical characteristics at specified free-air temperature, $V_{CC} = 5\text{ V}$ (unless otherwise noted)

PARAMETER	TEST CONDITIONS†	T _A ‡	LM124A			LM224A			LM324A			UNIT
			MIN	TYP§	MAX	MIN	TYP§	MAX	MIN	TYP§	MAX	
V _{IO}	Input offset voltage $V_{CC} = 5\text{ V}$ to 30 V , $V_{IC} = V_{ICRmin}$, $V_O = 1.4\text{ V}$	25°C	2	2	3	2	2	3	2	2	3	mV
		Full range	4		4			4			5	
I _{IO}	Input offset current $V_O = 1.4\text{ V}$	25°C	10	2	2	15	2	30	2	2	30	nA
		Full range	30		30			30			75	
I _{IB}	Input bias current $V_O = 1.4\text{ V}$	25°C	-50	-15	-80	-15	-15	-80	-15	-15	-100	nA
		Full range	-100		-100			-100			-200	
V _{ICR}	Common-mode input voltage range $V_{CC} = 30\text{ V}$	25°C	0 to $V_{CC}-1.5$			0 to $V_{CC}-1.5$			0 to $V_{CC}-1.5$			V
		Full range	0 to $V_{CC}-2$			0 to $V_{CC}-2$			0 to $V_{CC}-2$			
V _{OH}	High-level output voltage $R_L = 2\text{ k}\Omega$, $V_{CC} = 30\text{ V}$, $R_L \geq 10\text{ k}\Omega$	25°C	26	27	28	26	27	28	26	27	28	V
		Full range	20		20			20			20	
V _{OL}	Low-level output voltage $R_L \leq 10\text{ k}\Omega$	25°C	25	25	25	25	25	25	25	25	25	mV
		Full range	25		25			25			25	
A _{VD}	Large-signal differential voltage amplification $V_{CC} = 15\text{ V}$, $V_O = 1\text{ V}$ to 11 V , $R_L \geq 2\text{ k}\Omega$	Full range	70	80	80	70	80	80	65	80	80	V/mV
CMRR	Common-mode rejection ratio $V_{IC} = V_{ICRmin}$	25°C	65	100	100	65	100	100	65	100	100	dB
k _{SVR}	Supply-voltage rejection ratio ($\Delta V_{CC}/\Delta V_O$)	25°C	120			120			120			dB
V _{O1} /V _{O2}	Crosstalk attenuation $f = 1\text{ kHz}$ to 20 kHz	25°C	-20	-30	-60	-20	-30	-60	-20	-30	-60	dB
		Full range	-10		-10			-10			-10	
I _O	Output current $V_{CC} = 15\text{ V}$, $V_{ID} = -1\text{ V}$, $V_O = 15\text{ V}$	25°C	5	5	5	5	5	5	5	5	5	mA
		Full range	12		12			12			30	
I _{OS}	Short-circuit output current V_{CC} at 5 V , $V_O = 0$	25°C	±40	±60	±60	±40	±60	±60	±40	±60	±60	mA
		Full range	0.7	1.2	1.2	0.7	1.2	1.2	0.7	1.2	1.2	
I _{CC}	Supply current (four amplifiers) No load	25°C	1.4	1.4	1.4	1.4	1.4	1.4	1.4	1.4	1.4	mA
		Full range	1.4		1.4			1.4			3	

† All characteristics are measured under open-loop conditions with zero common-mode input voltage unless otherwise specified.

‡ Full range is -55°C to 125°C for LM124A, -25°C to 85°C for LM224A, and 0°C to 70°C for LM324A.

§ All typical values are at T_A = 25°C.



8961724 0106144 261

**LM124, LM124A, LM224, LM224A
LM324, LM324A, LM324Y, LM2902, LM2902Q
QUADRUPLE OPERATIONAL AMPLIFIERS**

SLOS066E – SEPTEMBER 1975 – REVISED FEBRUARY 1997

electrical characteristics, $V_{CC} = 5\text{ V}$, $T_A = 25^\circ\text{C}$ (unless otherwise noted)

PARAMETER	TEST CONDITIONS†	LM324Y			UNIT	
		MIN	TYP	MAX		
V_{IO} Input offset voltage	$V_{CC} = 5\text{ V to MAX}, V_{IC} = V_{ICRmin}, V_O = 1.4\text{ V}$		3	7	mV	
I_{IO} Input offset current			2	50	nA	
I_{IB} Input bias current			-20	-250	nA	
V_{ICR} Common-mode input voltage range	$V_{CC} = 5\text{ V to MAX}$		0 to $V_{CC}-1.5$		V	
V_{OH} High-level output voltage	$R_L = 10\text{ k}\Omega$		$V_{CC}-1.5$		V	
V_{OL} Low-level output voltage	$R_L \leq 10\text{ k}\Omega$		5	20	mV	
AVD Large-signal differential voltage amplification	$V_{CC} = 15\text{ V}, V_O = 1\text{ V to }11\text{ V}, R_L \geq 2\text{ k}\Omega$		15	100	V/mV	
$CMRR$ Common-mode rejection ratio	$V_{IC} = V_{ICRmin}$		65	80	dB	
k_{SVR} Supply-voltage rejection ratio ($\Delta V_{CC\pm}/\Delta V_{IO}$)			65	100	dB	
I_O Output current	$V_{CC} = 15\text{ V}, V_{ID} = 1\text{ V}, V_O = 0$		-20	-30	-60	mA
	$V_{CC} = 15\text{ V}, V_{ID} = -1\text{ V}, V_O = 15\text{ V}$		10	20		
	$V_{ID} = 1\text{ V}, V_O = 200\text{ mV}$		12	30		
I_{OS} Short-circuit output current	V_{CC} at 5 V, GND at -5 V, $V_O = 0$		± 40	± 60		mA
I_{CC} Supply current (four amplifiers)	$V_O = 2.5 V_{CC}$, No load		0.7	1.2		mA
	$V_{CC} = \text{MAX}$, $V_O = 0.5 V_{CC}$, No load		1.1	3		

† All characteristics are measured under open-loop conditions with zero common-mode input voltage unless otherwise specified. MAX V_{CC} for testing purposes is 30 V.

8961724 0106145 1T8



POST OFFICE BOX 655303 • DALLAS, TEXAS 75265