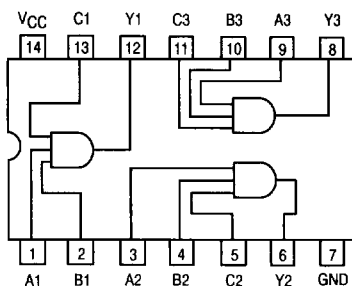


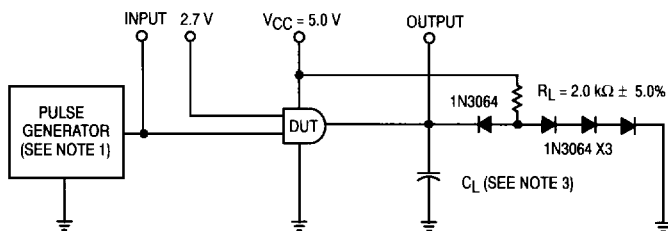
# Triple 3-Input Positive AND Gate

ELECTRICALLY TESTED PER:  
MIL-M-38510/31001

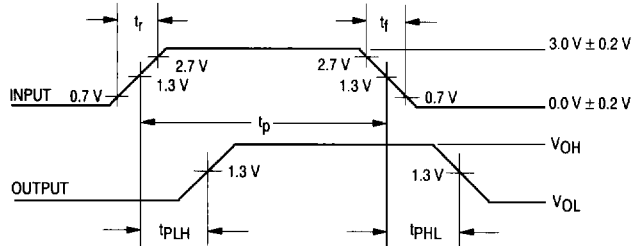
LOGIC DIAGRAM



AC TEST CIRCUIT



WAVEFORMS



**NOTES:**

1. Pulse generator has the following characteristics:  $t_r \leq 15$  ns,  $t_f \leq 6.0$  ns, PRR  $\leq 1.0$  MHz,  $t_p = 0.5$   $\mu$ s, and  $Z_{OUT} = 50$   $\Omega$ .
2. Inputs not under test are at 2.7 V.
3.  $C_L = 50$  pF  $\pm 10\%$ , including scope probe, wiring and stray capacitance.
4. Voltage measurements are to be made with respect to network ground terminal.
5. All diodes are 1N3064 or equivalent.

## Military 54LS11



**AVAILABLE AS:**

- 1) JAN: JM38510/31001BXA
- 2) SMD: N/A
- 3) 883: 54LS11/BXAJC

**X = CASE OUTLINE AS FOLLOWS:**  
PACKAGE: CERDIP: C  
CERFLAT: D  
LCC: 2

**THE LETTER "M" APPEARS BEFORE THE / ON LCC.**

**PIN ASSIGNMENTS**

FUNCT.	DIL 632-08	FLATS 717-04	LCC 756A-02	BURN-IN (COND. A)
A1	1	1	2	VCC
B1	2	2	3	VCC
A2	3	3	4	VCC
B2	4	4	6	VCC
C2	5	5	8	VCC
Y2	6	6	9	VCC
GND	7	7	10	GND
Y3	8	8	12	VCC
A3	9	9	13	VCC
B3	10	10	14	VCC
C3	11	11	16	VCC
Y1	12	12	18	VCC
C1	13	13	19	VCC
VCC	14	14	20	VCC

**BURN-IN CONDITIONS:**  
VCC = 5.0 V MIN/6.0 V MAX

**TRUTH TABLE**

A	B	C	Y
0	0	0	0
0	0	1	0
0	1	0	0
0	1	1	0
1	0	0	0
1	0	1	0
1	1	0	0
1	1	1	1

Symbol	Parameter	Limits						Unit	Test Condition (Unless Otherwise Specified)
		+ 25°C		+ 125°C		- 55°C			
		Subgroup 1		Subgroup 2		Subgroup 3			
		Min	Max	Min	Max	Min	Max		
V <sub>OH</sub>	Logical "1" Output Voltage	2.5		2.5		2.5		V	V <sub>CC</sub> = 4.5 V, I <sub>OH</sub> = -400 μA, V <sub>IH</sub> = 2.0 V (all inputs), or V <sub>IN</sub> = 5.5 V on all inputs.
V <sub>OL</sub>	Logical "0" Output Voltage		0.4		0.4		0.4	V	V <sub>CC</sub> = 4.5 V, I <sub>OL</sub> = 4.0 mA, V <sub>IL</sub> = 0.7 V, other inputs = 5.5 V.
V <sub>IC</sub>	Input Clamping Voltage		-1.5					V	V <sub>CC</sub> = 4.5 V, I <sub>IN</sub> = -18 mA, other inputs are open.
I <sub>IH</sub>	Logical "1" Input Current		20		20		20	μA	V <sub>CC</sub> = 5.5 V, V <sub>IH</sub> = 2.7 V, other inputs = GND.
I <sub>IHH</sub>	Logical "1" Input Current		100		100		100	μA	V <sub>CC</sub> = 5.5 V, V <sub>IHH</sub> = 5.5 V, other inputs = GND.
I <sub>IL</sub>	Logical "0" Input Current	-150	-380	-150	-380	-150	-380	μA	V <sub>CC</sub> = 5.5 V, V <sub>IL</sub> = 0.4 V, other inputs = 5.5 V.
I <sub>OS1</sub>	Output Short Circuit Current, 2Y and 3Y	-30	-130	-30	-130	-30	-130	mA	V <sub>CC</sub> = 5.5 V, V <sub>IN</sub> = 5.5 V (all inputs), V <sub>OUT</sub> = 0 V.
I <sub>OS2</sub>	Output Short Circuit Current, Y1	-15	-100	-15	-100	-15	-100		
I <sub>CCH</sub>	Power Supply Current		3.6		3.6		3.6	mA	V <sub>CC</sub> = 5.5 V, V <sub>IN</sub> = 5.5 V (all inputs).
I <sub>CCL</sub>	Power Supply Current		6.6		6.6		6.6	mA	V <sub>CC</sub> = 5.5 V, V <sub>IN</sub> = 0 V (all inputs).
V <sub>IH</sub>	Logical "1" Input Voltage	2.0		2.0		2.0		V	V <sub>CC</sub> = 4.5 V.
V <sub>IL</sub>	Logical "0" Input Voltage		0.7		0.7		0.7	V	V <sub>CC</sub> = 4.5 V.
	Functional Tests	Subgroup 7		Subgroup 8A		Subgroup 8B			per Truth Table with V <sub>CC</sub> = 5.0 V, V <sub>INL</sub> = 0.4 V, and V <sub>INH</sub> = 2.5 V.

Symbol	Parameter	Limits						Unit	Test Condition (Unless Otherwise Specified)
		+ 25°C		+ 125°C		- 55°C			
		Subgroup 9		Subgroup 10		Subgroup 11			
		Min	Max	Min	Max	Min	Max		
t <sub>PHL</sub>	Propagation Delay /Data-Output	2.0	20	2.0	30	2.0	30	ns	V <sub>CC</sub> = 5.0 V, C <sub>L</sub> = 50 pF, R <sub>L</sub> = 2.0 kΩ. V <sub>CC</sub> = 5.0 V, C <sub>L</sub> = 15 pF, R <sub>L</sub> = 2.0 kΩ.
t <sub>PHL</sub>	Output High-Low	—	20	—	25	—	25		
t <sub>PLH</sub>	Propagation Delay /Data-Output	2.0	15	2.0	25	2.0	25	ns	V <sub>CC</sub> = 5.0 V, C <sub>L</sub> = 50 pF, R <sub>L</sub> = 2.0 kΩ. V <sub>CC</sub> = 5.0 V, C <sub>L</sub> = 15 pF, R <sub>L</sub> = 2.0 kΩ.
t <sub>PLH</sub>	Output Low-High	—	15	—	20	—	20		

**NOTE:**

- The limits specified for C<sub>L</sub> = 15 pF are guaranteed but not tested.