

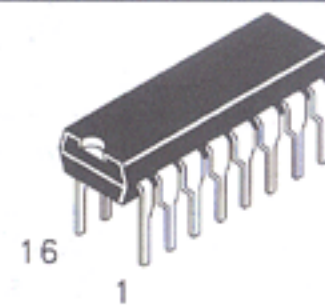
DV74HCT139A Available Q2, 1995

Dual 1-of-4 Decoder/ Demultiplexer

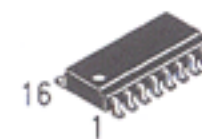
This device consists of two independent 1-of-4 decoders, each of which decodes a 2-bit Address to 1-of-4 active-low outputs. Active-low Selects are provided to facilitate the demultiplexing and cascading functions. The demultiplexing function is accomplished by using the Address inputs to select the desired device output, and utilizing the Select as a data input.

- Output Drive Capability: 10 LSTTL Loads
- Outputs Directly Interface to CMOS, NMOS, and TTL
- Operating Voltage Range: 2 to 6 V for HC devices
- Low Input Current: 1 μ A
- DC, AC parameters guaranteed from -55°C to 125°C

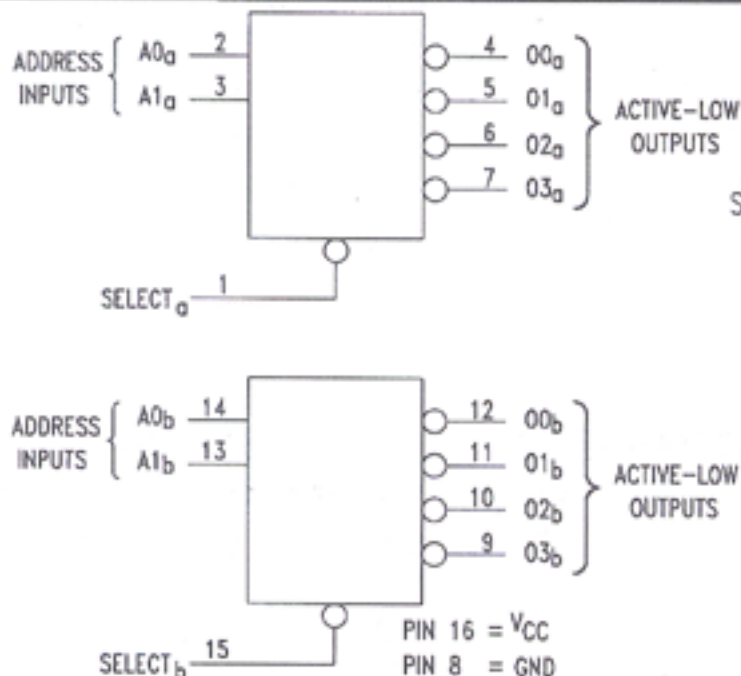
DV74HC139A DV74HCT139A



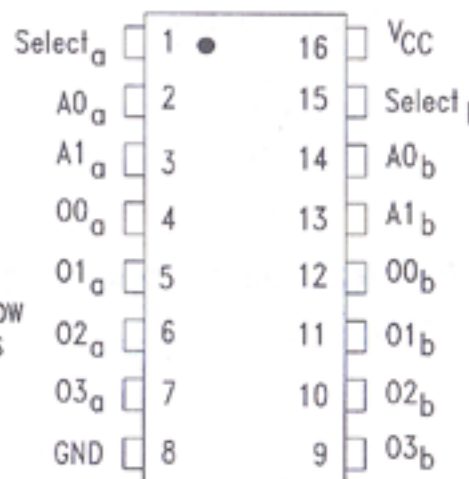
N Suffix
Plastic DIP
AVG-003 Case



D Suffix
Plastic SOP
AVG-004 Case



PIN ASSIGNMENT



TRUTH TABLE

Inputs			Outputs			
Select	A1	A0	O0	O1	O2	O3
H	X	X	H	H	H	H
L	L	L	L	H	H	H
L	L	H	H	L	H	H
L	H	L	H	H	L	H
L	H	H	H	H	H	L

H = High Logic Level
L = Low Logic Level
X = Don't Care

ABSOLUTE MAXIMUM RATINGS

Maximum ratings are those values beyond which damage to the device may occur.

Symbol	Parameter	Value	Unit
V _{CC}	DC Supply Voltage (Referenced to GND)	-0.5 to +7.0	V
V _{IN}	DC Input Voltage (Referenced to GND)	-1.5 to V _{CC} + 1.5	V
V _{OUT}	DC Output Voltage (Referenced to GND)	-0.5 to V _{CC} + 0.5	V
I _{IN}	DC Input Current, per Pin	± 20	mA
I _{OUT}	DC Output Current, per Pin	± 25	mA
I _{CC}	DC Supply Current, V _{CC} and GND Pins	± 50	mA
P _D	Power Dissipation in Still Air, Plastic DIP SOP Package	750 500	mW
T _{STG}	Storage Temperature Range	-65 to +150	°C
TL	Lead Temperature, 1mm from Case for 10 Seconds	260	°C

GUARANTEED OPERATING CONDITIONS

Symbol	Parameter	Min	Max	Unit
V _{CC}	DC Supply Voltage, HC (HCT), Referenced to GND	2.0 (4.5)	6.0 (5.5)	V
V _{IN} , V _{OUT}	DC Input Voltage, Output Voltage, Referenced to GND	0	V _{CC}	V
T _A	Ambient Temperature	-55	+125	°C
t _r , t _f	Input Rise and Fall Time: HC: V _{CC} =2.0V HCT: V _{CC} =5.5V / HC: V _{CC} =4.5V HC: V _{CC} =6.0V	0	1000 500 400	ns

DC ELECTRICAL CHARACTERISTICS

Symbol	Parameter	Conditions	V _{CC} V	Guaranteed Limits			Unit
				25°C to -55°C	≤85°C	≤125°C	
V _{IH}	Minimum High-Level Input Voltage	V _{OUT} = 0.1 V, I _{OUT} ≤ 20 μA or V _{OUT} = V _{CC} - 0.1 V	2.0	1.5	1.5	1.5	V
			4.5	3.15	3.15	3.15	
			6.0	4.2	4.2	4.2	
V _{IL}	Maximum Low-Level Input Voltage	V _{OUT} = 0.1 V, I _{OUT} ≤ 20 μA or V _{OUT} = V _{CC} - 0.1 V	2.0	0.5	0.5	0.5	V
			4.5	1.35	1.35	1.35	
			6.0	1.8	1.8	1.8	
V _{OH}	Minimum High-Level Output Voltage	V _{IN} = V _{IH} or V _{IL} I _{OUT} ≤ 20 μA	2.0	1.9	1.9	1.9	V
			4.5	4.4	4.4	4.4	
		6.0	5.9	5.9	5.9		
		V _{IN} = V _{IH} or V _{IL} , I _{OUT} ≤ 4.0 mA I _{OUT} ≤ 5.2 mA	4.5	3.98	3.84	3.7	
V _{OL}	Maximum Low Level Output Voltage	V _{IN} = V _{IH} or V _{IL} I _{OUT} ≤ 20 μA	2.0	0.1	0.1	0.1	V
			4.5	0.1	0.1	0.1	
		6.0	0.1	0.1	0.1		
		V _{IN} = V _{IH} or V _{IL} , I _{OUT} ≤ 4.0 mA I _{OUT} ≤ 5.2 mA	4.5	0.26	0.33	0.40	
6.0			6.0	0.26	0.33	0.40	V
I _{IN}	Maximum Input Leakage Current	V _{IN} = V _{CC} or GND	6.0	± 0.1	± 1.0	± 1.0	μA
I _{CC}	Maximum Quiescent Supply Current (Per Package)	V _{IN} = V _{CC} or GND I _{OUT} ≤ 0 μA	6.0	4.0	40	160	μA

AC ELECTRICAL CHARACTERISTICS over full operating conditions (C_L = 50 pF, Input t_r = t_f = 6 ns)

Symbol	Parameter	V _{CC} V	Guaranteed Limit			Unit
			25°C to -55°C	≤85°C	≤125°C	
t _{PLH} , t _{PHL}	Maximum Propagation Delay Time, Select to Output Y	2.0	115	145	175	ns
		4.5	23	29	35	
		6.0	20	25	30	
t _{PLH} , t _{PHL}	Maximum Propagation Delay Time, Input A to Output Y	2.0	115	145	175	ns
		4.5	23	29	35	
		6.0	20	25	30	
t _{TLH} , t _{THL}	Maximum Output Transition Time Any Output	2.0	75	95	110	ns
		4.5	15	19	22	
		6.0	13	16	19	
C _{IN}	Maximum Input Capacitance	—	10	10	10	pF
C _{PD}	Power Dissipation Capacitance (Per Gate) Used to determine the no-load dynamic power consumption, P _D = C _{PD} V _{CC} ² f + I _{CC} V _{CC}	Typical @ 25°C, V _{CC} = 5 V			pF	
		55				

DC ELECTRICAL CHARACTERISTICS

Symbol	Parameter	Conditions	V _{CC} V	Guaranteed Limits			Unit
				25°C to -55°C	≤85°C	≤125°C	
V _{IH}	Minimum High-Level Input Voltage	V _{OUT} = 0.1 V, I _{OUT} ≤ 20 μA or V _{out} = V _{CC} - 0.1V	4.5 5.5	2.0 2.0	2.0 2.0	2.0 2.0	V
V _{IL}	Maximum Low-Level Input Voltage	V _{OUT} = 0.1 V, I _{OUT} ≤ 20 μA or V _{out} = V _{CC} - 0.1V	4.5 5.5	0.8 0.8	0.8 0.8	0.8 0.8	V
V _{OH}	Minimum High-Level Output Voltage	V _{IN} = V _{IH} or V _{IL} I _{OUT} ≤ 20 μA	4.5 5.5	4.4 5.4	4.4 5.4	4.4 5.4	V
		V _{IN} = V _{IH} or V _{IL} I _{OUT} ≤ 4.0 mA	4.5	3.98	3.84	3.7	
V _{OL}	Maximum Low Level Output Voltage	V _{IN} = V _{IH} or V _{IL} I _{OUT} ≤ 20 μA	4.5 5.5	0.1 0.1	0.1 0.1	0.1 0.1	V
		V _{IN} = V _{IH} or V _{IL} I _{OUT} ≤ 4.0 mA	4.5	0.26	0.33	0.40	
I _{IN}	Maximum Input Leakage Current	V _{IN} = V _{CC} or GND	6.0	± 0.1	± 1.0	± 1.0	μA
I _{CC}	Maximum Quiescent Supply Current (Per Package)	V _{IN} = V _{CC} or GND I _{OUT} = 0 μA	6.0	4.0	40	160	μA

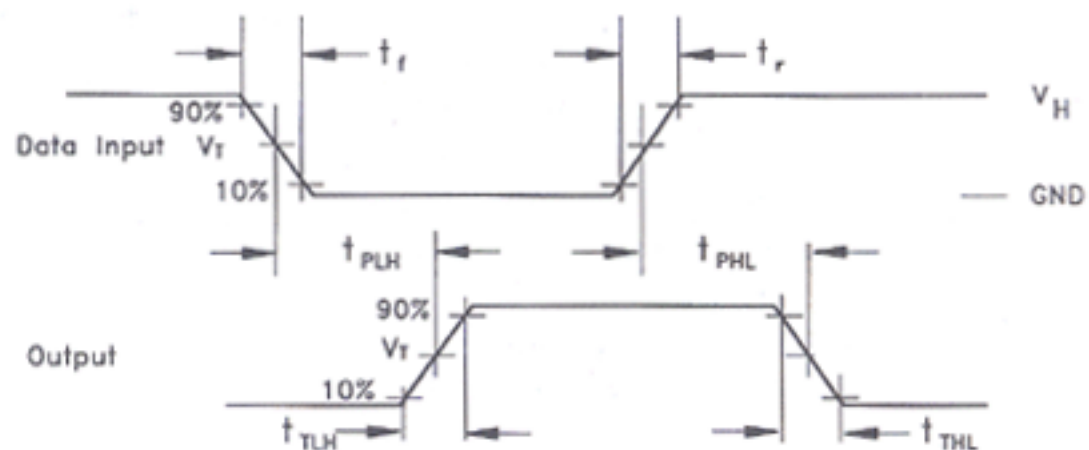
ΔI _{CC}	Additional Quiescent Supply Current	V _{IN} = 2.4 V, Any one Input V _{IN} = V _{CC} or GND, Other Inputs I _{OUT} = 0 mA	5.5	> -55°C	25°C to 125°C	mA
				2.9	2.4	

AC ELECTRICAL CHARACTERISTICS over full operating conditions (CL = 50 pF, Input t_r = t_f = 6 ns)

Symbol	Parameter	V _{CC} V	Guaranteed Limit			Unit
			25°C to -55°C	≤85°C	≤125°C	
t _{PLH} , t _{PHL}	Maximum Propagation Delay Time, Select to Output Y	5.0 ±10%	23	29	35	ns
t _{PLH} , t _{PHL}	Maximum Propagation Delay Time, Input A to Output Y	5.0 ±10%	23	29	35	ns
t _{TLH} , t _{THL}	Maximum Output Transition Time Any Output	5.0 ±10%	15	19	22	ns
C _{IN}	Maximum Input Capacitance	—	10	10	10	pF

C _{PD}	Power Dissipation Capacitance (Per Gate) Used to determine the no-load dynamic power consumption, P _D = C _{PD} V _{CC} ² f + I _{CC} V _{CC}	Typical @ 25°C, V _{CC} = 5 V		pF
		60		

SWITCHING WAVEFORMS



Input and Output Threshold Voltage: V_T = 50% V_{CC} for HC,
1.3V for HCT, V_H = V_{CC} for HC, 3V for HCT