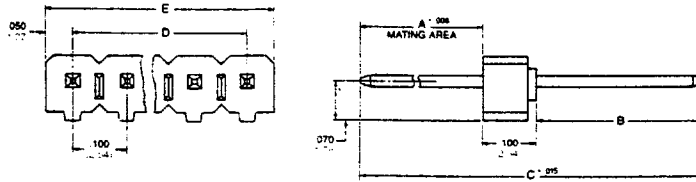


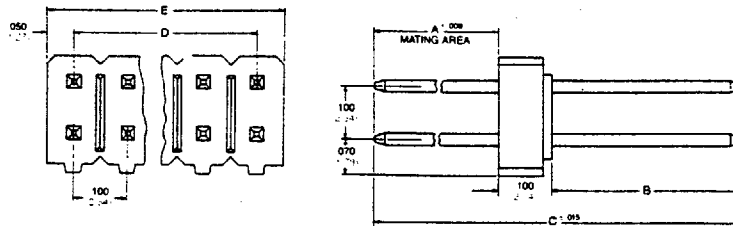


Hi-Temp Male Headers

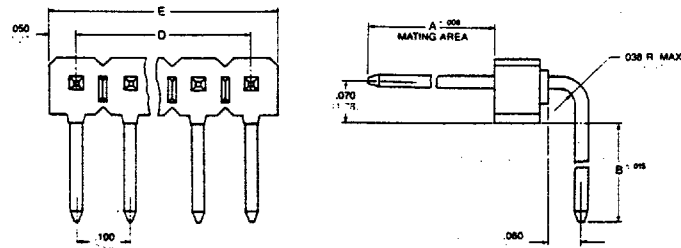
Straight, single row (SS)



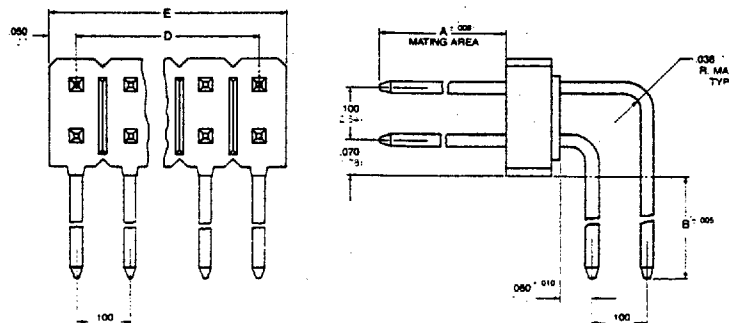
Straight, double row (SD)



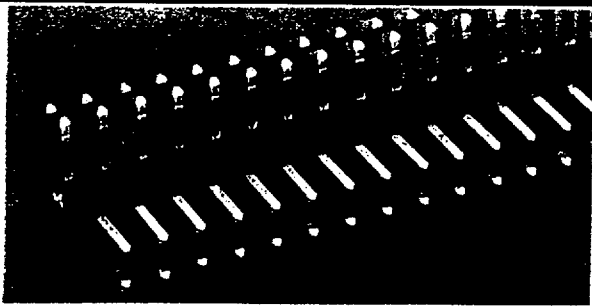
Right angle, single row (RS)



Right angle, double row (RD)



A = .230 (5.54) or .318 (8.08)
 D = .100 (2.54) or .200 (5.08)
 MAX = No. Positions - 10
 E MAX = 100 (2.54)



Teka Hi-Temp Male Headers feature DuPont Rynite PET polyester and copper alloy contacts.



Hi-Temp Male Headers

General Information

- Single & dual row, vertical and right angle configurations
- Single row available in 1x36 position double row available in 2x36 position
- .100" centerline spacing; double row headers are on .100" x .100" grid
- Low cost I/O interconnection
- Standard mating pin lengths are .230" and .318"
- Stackable end-to-end
- Consult factory for optional pin lengths and plating

Features

- High temperature plastic allows infra-red and vapor phase soldering.
- Standoffs permit cleaning of soldering contaminates.
- Barb feature provides improved retention.
- Drawn wire pins provide smooth contact surfaces on all sides.
- Selective gold plating available.

Technical Data

- Current rating = 5 amps (maximum).
- Dielectric withstanding = 7500 VAC RMS (minimum).
- Insulation resistance = 10,000 megaohms (minimum).
- Operating temperatures = 600 VDC (sea level).
- Contact retention = 4 lbs. (minimum).

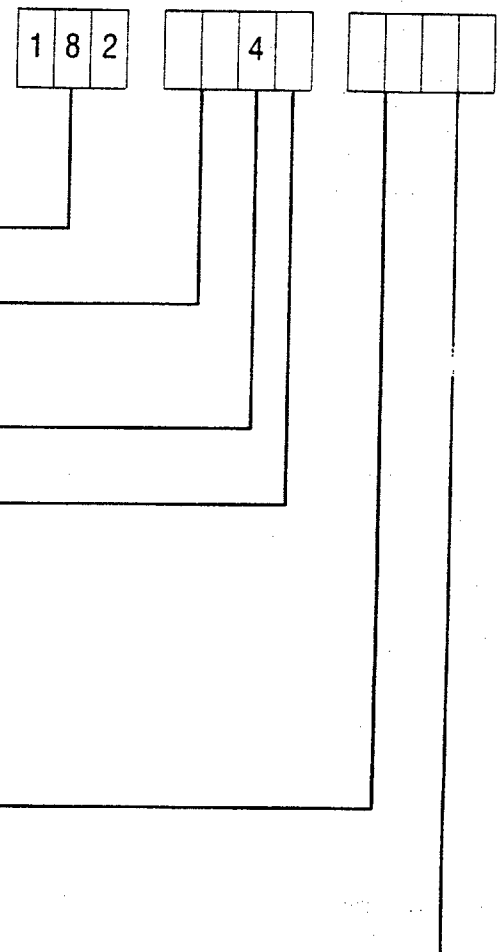
Materials

- Contact = copper alloy
- Insulator body = thermoplastic PET, UL flammability rating 94 VO.

Test Data

- Specifications, prints and samples are available upon request from Teka Customer Service.

Ordering Information Part Number Codes



Series

182 - Male Header

No. Positions/Row

01 through 36
(1 x 36 single row max.)
(2 x 36 double row max.)

Contact Material

4 - Copper Alloy

Finish

0 - 100 μ " tin min. alloy over 50 μ " nickel min.
on contact area and tails

2 - 10 μ " gold min. over 50 μ " nickel min.
on contact area and tails

4 - 30 μ " gold min. over 50 μ " nickel min.
on contact area only,
100 μ " tin alloy min. on tails

For other plating options consult factory.

Configurations

- SS - straight, single row
- SD - straight, double row
- RS - right angle, single row
- RD - right angle, double row

Tail Length / Probe Length

- 10 - .100/.230
- 11 - .100/.318
- 20 - .200/.230
- 21 - .200/.318