

QS3251 Advanced Information



**High-Speed CMOS
QuickSwitch®
8:1 Mux / Demux**

QS3251

FEATURES/BENEFITS

- 5Ω switches connect inputs to outputs
- Pin compatible to the 74F251, 74FCT251, and 74FCT251T
- Undershoot clamp diodes on all I/Os
- Low power CMOS proprietary technology
- Zero propagation delay
- TTL-compatible control inputs
- Zero ground bounce in flow-through mode
- TTL compatible control inputs
- Available in 16-pin DIP, SOIC, & QSOP

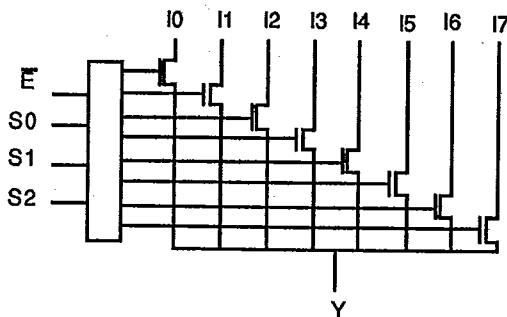
DESCRIPTION

The QS3251 is a high speed CMOS TTL-compatible 8:1 multiplexer/demultiplexer. The QS3251 has 3-state outputs. The QS3251 is function and pinout compatible QuickSwitch version of the 74F251, 74FCT251 and the 74ALS/AS/LS251 8:18:1 multiplexers. The low on resistance (5 ohms) of the 3251 allows inputs to be connected outputs without adding propagation delay and without generating additional ground bounce noise.

FUNCTION TABLE

E	Select			3251	Function
	S2	S1	S0	Y	
H	X	X	X	HI-Z	Disable
L	L	L	L	I0	S2-0 = 0
L	L	L	H	I1	S2-0 = 1
L	L	H	L	I2	S2-0 = 2
L	L	H	H	I3	S2-0 = 3
L	H	L	L	I4	S2-0 = 4
L	H	L	H	I5	S2-0 = 5
L	H	H	L	I6	S2-0 = 6
L	H	H	H	I7	S2-0 = 7

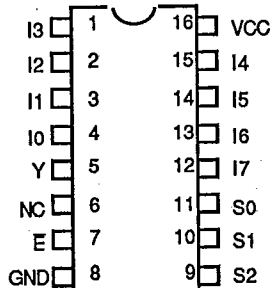
BLOCK DIAGRAM



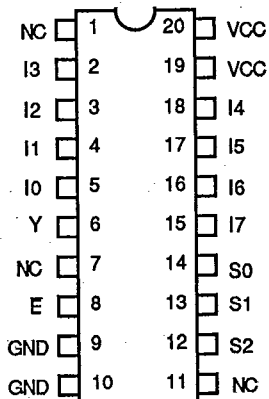
QS3251 Advanced Information

QS3251 PINOUT

PDIP, SOIC, QSOP



HQSOP



ALL PINS TOP VIEW

Note: Available in both 150 mil wide SOIC (package code S1) and 300 mil SOIC (package code SO).

3251 PIN DESCRIPTION

Name	I/O	Description
I0-7	I	Data Inputs
S0-2	I	Select Inputs
E	I	Enable
Y	O	Data Output

QS3251 Advanced Information

ABSOLUTE MAXIMUM RATINGS

Supply Voltage to Ground..... -0.5V to +7.0V
 DC Switch Voltage V_s -0.5V to $V_{CC} + 0.5V$
 DC Input Voltage V_i -0.5V to $V_{CC} + 0.5V$
 AC Input Voltage (for a pulse width ≤ 20 ns)..... -3.0V
 DC Input Diode Current with $V_i < 0$ -20 mA
 DC Channel Current Max. current/pin..... 120 mA
 Maximum Power Dissipation..... 0.5 watts
 T_{STG} Storage Temperature..... -65° to +165°C

CAPACITANCE

TA = 25 °C, f = 1 MHz, Vin = 0V, Vout = 0 V

Pins	SOIC		QSOP		PDIP		Unit
	Typ	Max	Typ	Max	Typ	Max	
Controls	3		3		4		pF
QuickSwitch Channels	7		7		8		pF

Note: Capacitance is characterized but not tested

QS3251 Advanced Information

DC ELECTRICAL CHARACTERISTICS OVER OPERATING RANGE

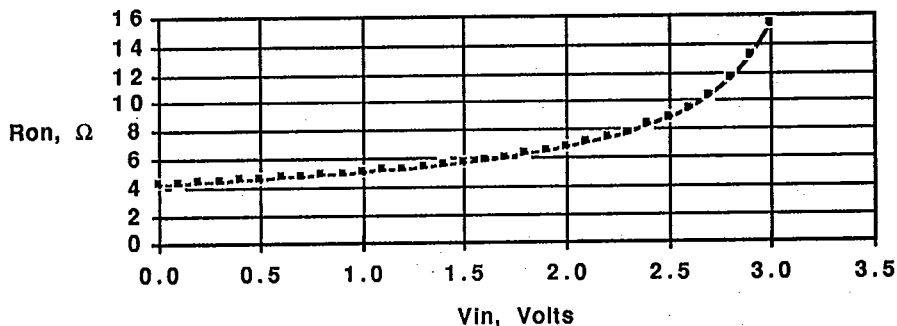
Commercial $T_A = 0^\circ\text{C}$ to 70°C , $V_{CC} = 5.0\text{V} \pm 5\%$ Military $T_A = -55^\circ\text{C}$ to 125°C , $V_{CC} = 5.0\text{V} \pm 10\%$

Symbol	Parameter	Test Conditions	Min	Typ	Max	Unit
Vih	Input HIGH Voltage	Guaranteed Logic HIGH for Control Inputs	2.0	-	-	Volts
Vil	Input LOW Voltage	Guaranteed Logic LOW for Control Inputs	-	-	0.8	Volts
iin	Input Leakage Current	$0 \leq V_{in} \leq V_{CC}$	-	-	5	μA
ioz	Off State Current (Hi-Z)	$0 \leq V_{in} \leq V_{CC}$	-	-	5	μA
ios	Short Circuit Current (2)	$Y(I) = 0\text{V}, I(Y) = V_{CC}$	-	300	-	mA
Vic	Clamp Diode Voltage	$V_{CC} = \text{Min}, I_{in} = -18\text{ mA}$	-	-0.7	-1.2	Volts
Ron	Switch On Resistance (Note 3)	$V_{CC} = \text{Min}, V_{in} = 0.0\text{ Volts}$ $I_{on} = 30\text{ mA}$	-	5	7	Ω
		$V_{CC} = \text{Min}, V_{in} = 2.4\text{ Volts}$ $I_{on} = 15\text{ mA}$	-	10	15	Ω

Notes:

1. Typical values indicate $V_{CC} = 5.0\text{V}$ and $T_A = 25^\circ\text{C}$.
2. Not more than one output should be used to test this high power condition, and the duration is 1 second.
3. Measured by voltage drop between A and Y pin at indicated current through the switch. On resistance is determined by the lower of the voltages on the two pins.
4. During input/output leakage testing all pins are at a High or Low state, and the OE control is High.

On Resistance vs Vin @ 4.75 Vcc



QS3251 Advanced Information

POWER SUPPLY CHARACTERISTICS

Symbol	Parameter	Test Conditions (1)	Min	Typ	Max	Unit
I _{cc}	Quiescent Power Supply Current	V _{cc} = MAX, V _i = GND or V _{cc} , f = 0	-	-	2.5	mA
ΔI _{cc}	Pwr Supply Current, per Input High (2)	V _{cc} = MAX, Input = 3.4 V, f = 0 Per control input	-	-	3.5	mA
Q _{ccd}	Dynamic Pwr Supply Current per mHz (3)	V _{cc} = MAX, I & Y pins open, Control input toggling @ 50% duty cycle	-	-	0.25	mA/ MHz

Notes:

1. For conditions shown as MIN or MAX use the appropriate values specified under DC specifications.
2. Per TTL driven input (V_i=3.4V, control inputs only). I and Y pins do not contribute to I_{cc}.
3. Guaranteed by design. This current applies to the control inputs only and represents the current required to switch internal capacitance at the specified frequency. The I and Y inputs generate no significant AC or DC currents as they transition.

QS3251 Advanced Information

SWITCHING CHARACTERISTICS OVER OPERATING RANGE

Commercial $T_A = 0^\circ\text{C}$ to 70°C , $V_{CC} = 5.0\text{V} \pm 5\%$ Military $T_A = -55^\circ\text{C}$ to 125°C , $V_{CC} = 5.0\text{V} \pm 10\%$
 Load = 50 pF, $R_{load} = 500\Omega$ unless otherwise noted.

Symbol	Descriptio	Note	Com		Mil		Unit
			Min	Max	Min	Max	
t _{IY}	Data Propagation Delay In to Y	2,3		0.25		0.25	ns
t _{SY}	Switch Turn On Delay S _n to Y	1	0.5	6.6	0.5	7.6	ns
t _{EY}	Switch Turn On Delay E _n to Y	1,2	0.5	6.0	0.5	7.0	ns
t _{PHZ} t _{PLZ}	Switch Turn Off Delay E _n to Y	1	0.5	6.0	0.5	7.0	ns

Notes:

1. See Test Circuit and Waveforms. Minimums guaranteed but not tested.
2. This parameter is guaranteed by design but not tested.
3. The bus switch contributes no propagation delay other than the RC delay of the on resistance of the switch and the load capacitance. The time constant for the switch alone is of the order of 0.25 ns for 50 pF load. Since this time constant is much smaller than the rise/fall times of typical driving signals, it adds very little propagation delay to the system. Propagation delay of the bus switch when used in a system is determined by the driving circuit on the driving side of the switch and its interaction with the load on the driven side.