

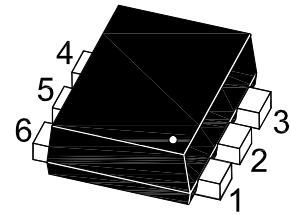
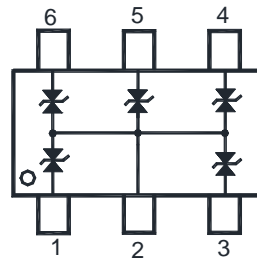
# ESDLC0500DE

## Transient Voltage Suppressors Array

ESD protection

### Features

- Ultra low diode capacitance
- Ultra low leakage current
- Bidirectional ESD protection of up to five lines



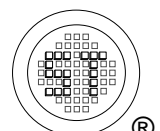
1. I/O1 2. GND 3. I/O2  
4. I/O3 5. Vcc 6. I/O4  
Marking Code: **E0**  
SOT-563 Plastic package

### Absolute Maximum Ratings ( $T_a = 25^\circ\text{C}$ )

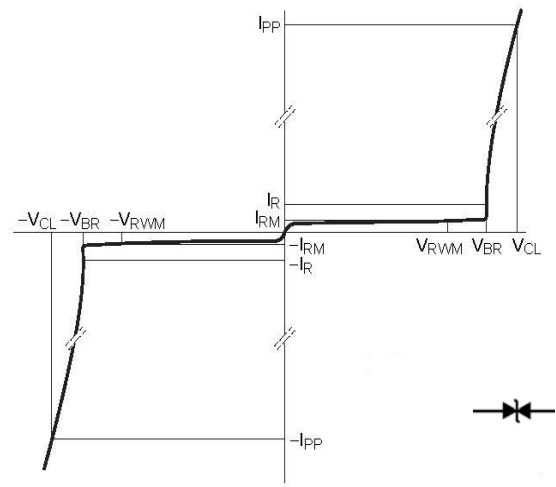
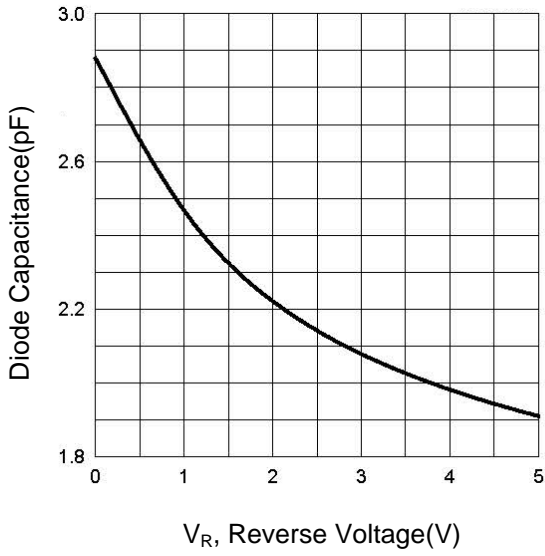
Parameter	Symbol	Value	Unit
IEC61000-4-2 (ESD) Air Contact	$V_{ESD}$	$\pm 10$	KV
Operation Temperature Range	$T_j$	150	$^\circ\text{C}$
Storage Temperature Range	$T_{stg}$	- 65 to + 150	$^\circ\text{C}$

### Characteristics at $T_a = 25^\circ\text{C}$

Parameter	Symbol	Min.	Typ.	Max.	Unit
Reverse Stand-Off Voltage	$V_{RWM}$	-	-	5	V
Reverse Breakdown Voltage at $I_R = 5 \text{ mA}$	$V_{BR}$	5.5	-	9.5	V
Leakage Current at $V_R = 5 \text{ V}$	$I_R$	-	-	100	nA
Junction Capacitance at $V_R = 0 \text{ V}$ , $f = 1 \text{ MHz}$	$C_j$	-	-	3.5	pF
Junction Capacitance at $V_R = 5 \text{ V}$ , $f = 1 \text{ MHz}$	$C_j$	-	1.9	-	pF

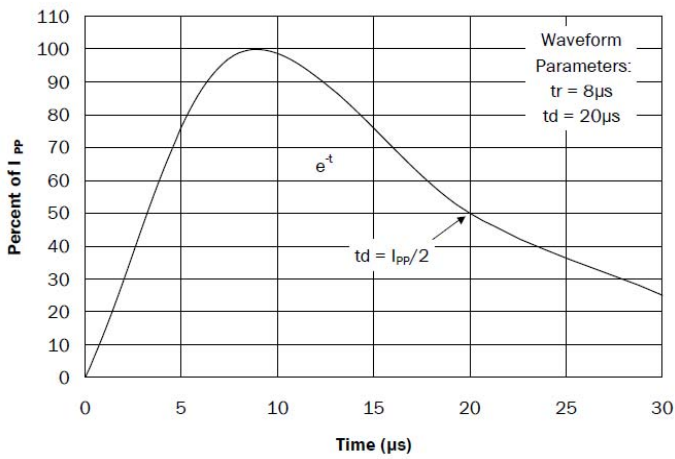


# ESDLC0500DE

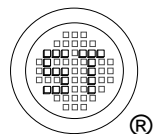
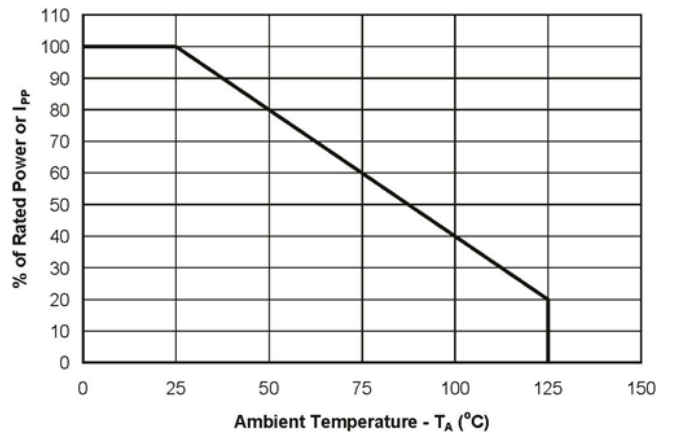


V-I Characteristics for a Bidirectional ESD Protection Diode

Pulse Waveform



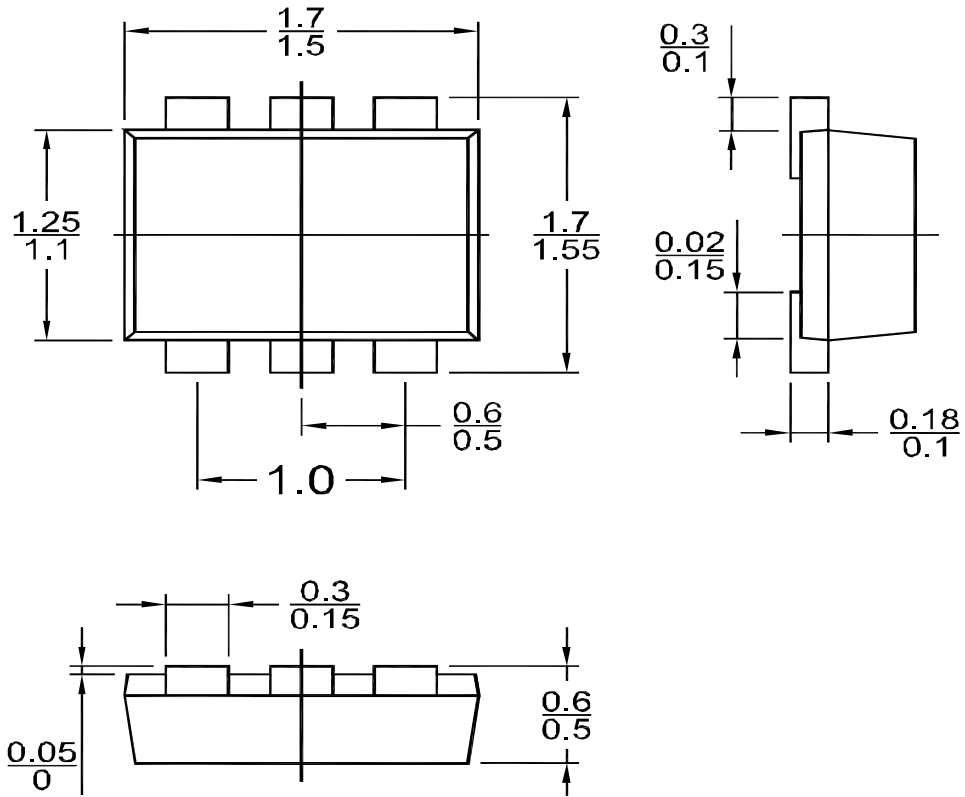
Power Derating Curve



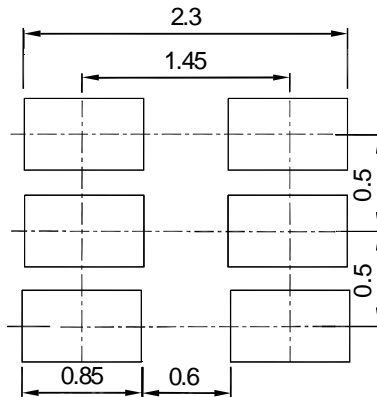
# ESDLC0500DE

## Package Outline Dimensions (Units: mm)

SOT-563



## Recommended Soldering Footprint



## Packing information

Package	Tape Width (mm)	Pitch		Reel Size		Per Reel Packing Quantity
		mm	inch	mm	inch	
SOT-563	8	4 ± 0.1	0.157 ± 0.004	178	7	4,000

