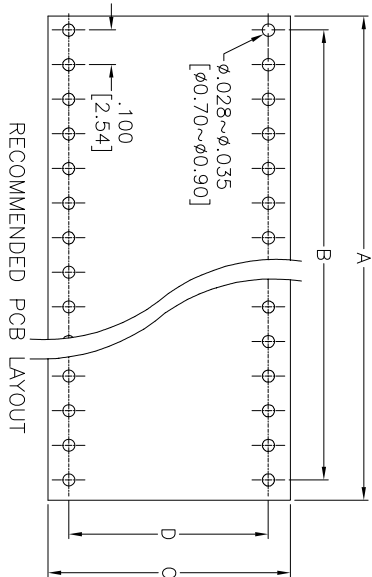
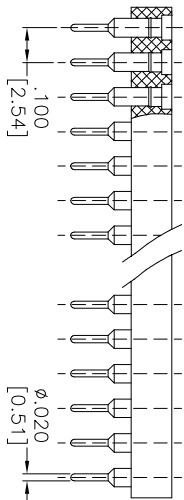
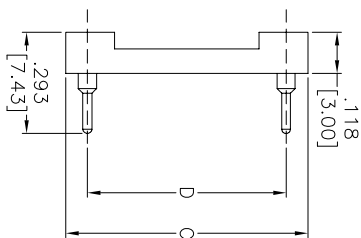
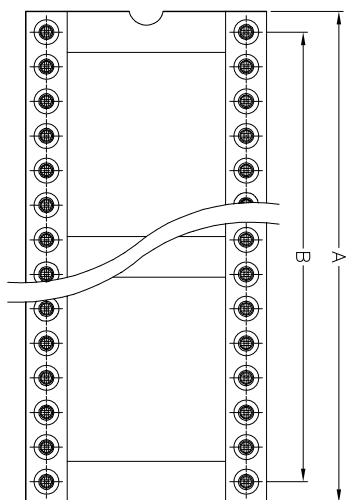


APPROVED: _____
 DATE: _____ TITLE: _____

Rev	AWO #	Description	Date	Appr
-		RELEASED	3/30/05	
A		REVISED SPEC.	10/25/11	



Series	POSITION	A	B	C	D
ICM-3XX	6	.300 [7.62]	.200 [5.08]		
	8	.400 [10.16]	.300 [7.62]		
	10	.500 [12.70]	.400 [10.16]		
	14	.700 [17.78]	.600 [15.24]	.400	
	16	.800 [20.32]	.700 [17.78]	.400	.300
	18	.900 [22.86]	.800 [20.32]	.400	.300
	20	1.00 [25.40]	.900 [22.86]		
	24	1.20 [30.48]	1.10 [27.94]		
	28	1.40 [35.56]	1.30 [33.02]		

RECOMMENDED PCB LAYOUT

SPECIFICATIONS:

- Material:** Insulator: Glass filled thermoplastic polyester, rated UL 94V-0
- Insulator color:** Black
- Contacts:** Brass
- Clip:** Beryllium copper
- Plating:** Gold over Nickel underplate on inner contacts, Tin over Copper underplate on outer sleeve
- Electrical:**
 - Current rating : 3amps/contact max.
 - Current resistance : $\leq 4m\Omega$ / contact
 - Insulation resistance : $\geq 10,000M\Omega$ at 500 VAC
 - Rated voltage : 100 VRMS / 150VDC
- Mechanical:**
 - Operating temperature : Gold plated : -55°C to + 125°C (Continuous) Tin plated : -40°C to + 105°C
 - Average insertion force : < 250g
 - Average withdrawal force : > 50g
 - With steel pin of $\phi 0.17$ [0.43mm]
 - With steel pin of $\phi 0.17$ [0.43mm]
 - Mechanical life : min. 200
- Environmental:** Lead free, RoHS compliant.

ADAM TECH

909 Railway Avenue, Union, NJ 07083
 Phone: 908-687-5000 Fax: 908-687-5710

TITLE
 SCREW MACHINE IC SOCKET
 .300" ROW SPACING

UNLESS OTHERWISE SPECIFIED ALL DIMENSIONS ARE IN INCHES [MM]	
TOLERANCES: EXCEPT AS NOTED	
INCHES	HOLE
.X ± .10	± .10
.XX ± .020	± .015
.XXX ± .015	± .010
APPROVALS	DATE
DRAWN	SS
CHECKED	
APPROVED	

SIZE	PART NO.	REV.
X	ICM-3XX-1-GT	A
REF:	S00007	
SCALE:	NIS	
SHEET	1 OF 1	

